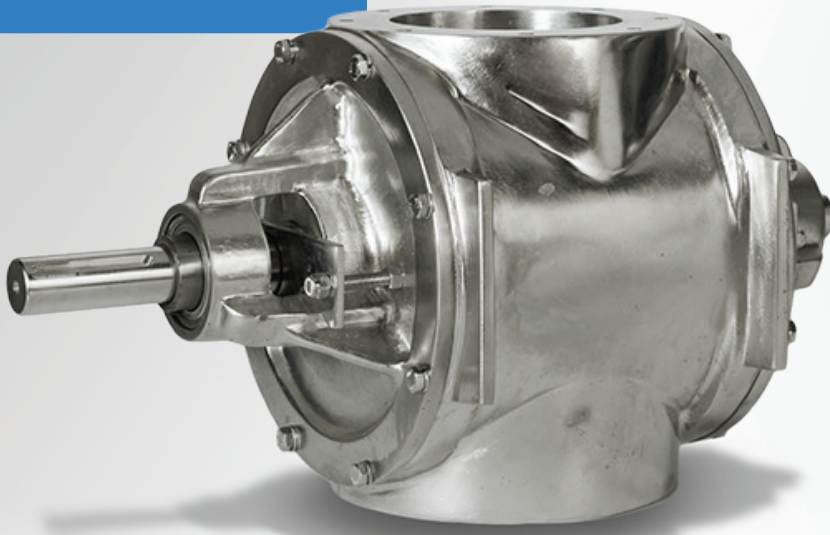


# Sanitary CDC-CI Series

## Rotary Valve for Metering/ Feeding and Airlock Applications

The Sanitary CDC-CI series drop-in valve is designed for applications that require very high-volume material throughput. It features an enlarged housing barrel and comes in cast-iron, 304 or 316 stainless steel for increased sanitation.



**SECTOR INDUSTRIES:**



Plastics



Pet Food



Construction



Food



Pharmaceutical  
and Cosmetics



Chemical

## FEATURES

- |   |  |   |
|---|--|---|
| <ul style="list-style-type: none"> <li>• 304 or 316 stainless steel valve housing, cast in North America, ensures superior housing solidification and metallurgy; eliminates pits and dimples where contaminants could accumulate.</li> </ul> | <ul style="list-style-type: none"> <li>• Product contact surfaces of the housing, and all rotor surfaces, are a No. 4 finish.</li> </ul>   | <ul style="list-style-type: none"> <li>• Easily manages pressure differentials up to 15 PSIG.</li> </ul>                        |
| <ul style="list-style-type: none"> <li>• This ACS Valves Pre-fit Performance™ Series valve enables simple and fast drop-in replacement of Carter Day® type CI rotary valves.</li> </ul>   | <ul style="list-style-type: none"> <li>• Available in 4 heights, from 12" to 25"; and 4 flange diameters from 6" to 12".</li> </ul>  | <ul style="list-style-type: none"> <li>• Excellent performance in high-temperature applications up to 500°F.</li> </ul>         |
| <ul style="list-style-type: none"> <li>• Large housing barrel enables 3-times more material throughput (CFR) than conventional valve housings with same flange opening.</li> </ul>  | <ul style="list-style-type: none"> <li>• Valve housing cast in North America; ensures superior strength and solidification of housing's metallurgy.</li> </ul>                     | <ul style="list-style-type: none"> <li>• 8-vane rotor, complete with beveled tips and sides.</li> </ul>                         |
|   | <ul style="list-style-type: none"> <li>• CNC-machined components and housing provide precision tolerances; eliminates axial shaft movement, extends maintenance cycles.</li> </ul> | <ul style="list-style-type: none"> <li>• Unique shaft seal design results in lowered maintenance and downtime costs.</li> </ul> |
|   |  | <ul style="list-style-type: none"> <li>• Round flanges aid material flow, improve cleaning.</li> </ul>                          |

**SPECIFICATIONS:**

INLET/OUTLET  
FLANGE SIZES:

4 sizes from 6" to 12"

MATERIAL OF  
CONSTRUCTION:

Stainless Steel

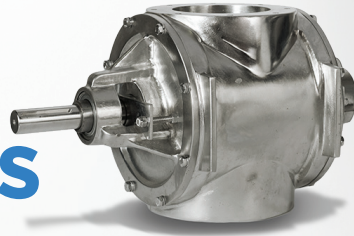
PRESSURE  
DIFFERENTIAL:

Up to 15 PSIG

HIGH TEMPERATURE  
RANGE:

500°F

# Sanitary CDC-CI Series



**ACS**  
VALVES

## OPTIONS

- |  |  |
|--|--|
| <ul style="list-style-type: none"><li>• Cast iron valve housing.</li></ul>   | <ul style="list-style-type: none"><li>• Shaft seal types: ACST-4™ glandless Teflon® shaft seal, and packing gland.</li></ul>   |
| <ul style="list-style-type: none"><li>• No. 4 finish on internal product contact surfaces of housing, and all rotor surfaces.</li></ul>  | <ul style="list-style-type: none"><li>• Valve housing vent ports.</li></ul>  |
| <ul style="list-style-type: none"><li>• Interior coatings: hard chrome, tungsten.</li></ul>  | <ul style="list-style-type: none"><li>• 6-vane, 10-vane, or 12-vane rotor.</li></ul>   |
| <ul style="list-style-type: none"><li>• Rotor types: closed-end, metering, shallow-pocket, adjustable-tip, and Teflon®-coated.</li></ul> | <ul style="list-style-type: none"><li>• Direct-drive and custom drive packages.</li></ul>  |
| <ul style="list-style-type: none"><li>• Adjustable rotor tip types: hardened steel, stainless steel, and bronze.</li></ul>               | <ul style="list-style-type: none"><li>• Application-specific accessories: blow-through adapter, shear plate deflector, surge hopper, motion speed switch assembly.</li></ul> |