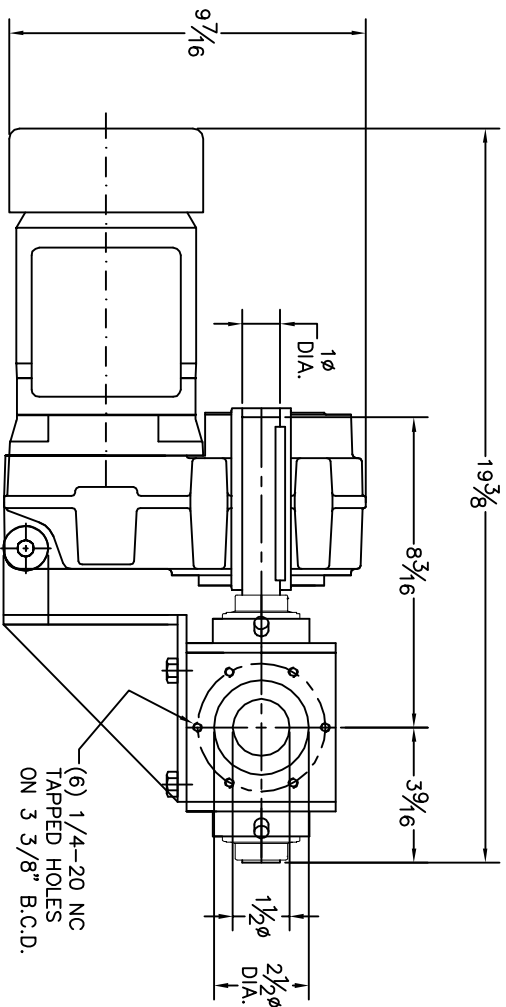
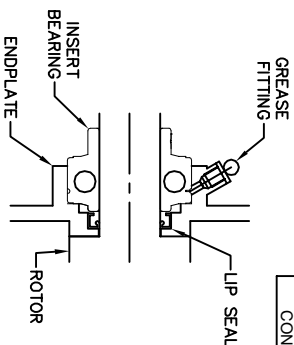
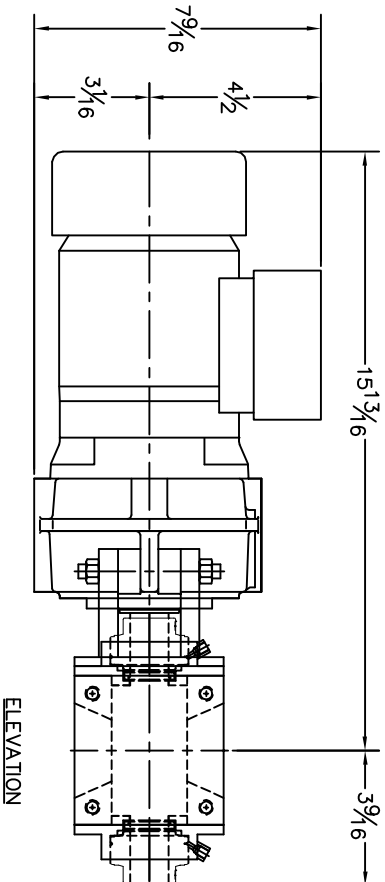


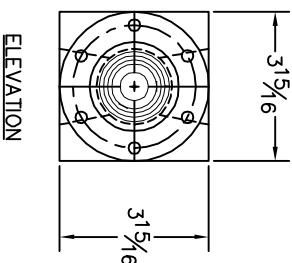
2.5" DIA.



PLAN VIEW



LIP SEAL TYPE SHAFT SEAL ASSEMBLY



VALVE INFORMATION					
HOUSING	ENDPLATE	ROTOR	BLADE TIP		
MAT'L	MAT'L	MAT'L	TYPE	MAT'L	CLEARANCE
M.S.	4140	M.S.	METERING	4140	.003-.005

MOTOR					
MFG.	HP	VOLTAGE	ENCLOSURE	RATING	EFFICIENCY RPM
NORD GEAR	.16	3/60/230-460V	TEFC	INVERT. DUTY	HIGH EFF. 1700

REDUCER					
MFG.	FRAME	RATIO	SIZE	R.P.M.	
NORD GEAR	SK0282NB	85:00	SK0282NB-63S/4	20	
CLINCHER					
CHAIN DRIVE NOT REQ'D.					
				VALVE CONDITIONS	
SIZE	BORE	SIZE	BORE	OPERATING TEMP.	SHAFT SEAL
---	---	---	---	AMBIENT	ACST-4

CONVEYING INFORMATION					
PRODUCT HANDLED	T.B.A.				
PRODUCT DENSITY	T.B.A.				
DISPLACEMENT / REV.	.0005 THROUGH .0009				
VALVE SPEED	20-25 RPM				
CONVEY RATE	T.B.A.				

NOTES

1. ALL DIMENSIONS IN INCHES
2. CONSTRUCTION: MACHINED MILD STEEL HOUSING AND ENDPLATES MACHINED METERING STYLE ROTOR CLOSE TOLERANCE C.C.W. ROTATION LOOKING AT THE DRIVE END.
3. BOTTOM & TOP FLANGE BOLT PATTERNS ARE SYMMETRICAL
4. PAINT: STANDARD METAL PREPARATION, EXTERIOR PRIMER AND ONE COAT FINISH ENAMEL - ACS BLUE DRIVE GUARD - HIGH VISIBILITY SAFETY YELLOW MOTOR/REDUCTOR - MANUFACTURERS STANDARD FINISH
5. LIP SEAL TYPE SHAFT SEAL (SEE DETAIL)
6. WEIGHT WITH DRIVE PACKAGE APPROX. 75 LBS.
7. STANDARD FEATURES:
 - ENDPLATES: MILD STEEL MACHINED CONSTRUCTION
 - ROTOR: MACHINED METERING STYLE ROTOR
 - HOUSING: MILD STEEL MACHINED CONSTRUCTION

ACS

VALVES

611 ARGYLE STEEL NORTH
CALEDONIA, ONT. N3W-1M1
PHONE: 905-765-2004
FAX: 905-765-4491
sales@oncoasterconveying.com
www.oncoasterconveying.com

TITLE: ACS MODEL 2.5" MICRO VALVE, GENERAL ARRANGEMENT

FOR: GENERAL USE ONLY

PD: N/A

SCALE: N.T.S.	DRAWN BY: G.T
DATE: JAN/15/14	CHECKED:
B-3650-2.5"	

Proprietary Information
This drawing is the confidential property of Oncoaster Conveying Systems Ltd. and is not to be reproduced, stored in a retrieval system, or transmitted in any form or by any means, electronic, mechanical, photocopying, recording, or by any information storage or retrieval system, without the prior written permission of Oncoaster Conveying Systems Ltd.
The reproduction, use or disclosure of this drawing without the prior written permission of Oncoaster Conveying Systems Ltd. is prohibited.
Oncoaster Conveying Systems Ltd. is a registered company in the Province of Ontario, Canada.