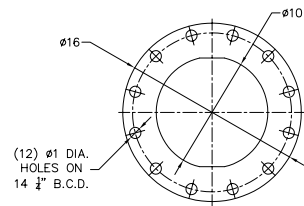
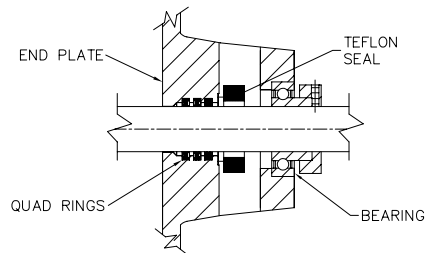


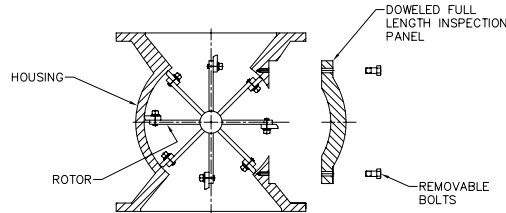
PLAN



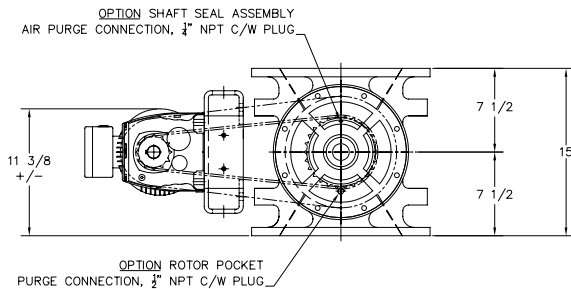
INLET/OUTLET
FLANGE DETAILS



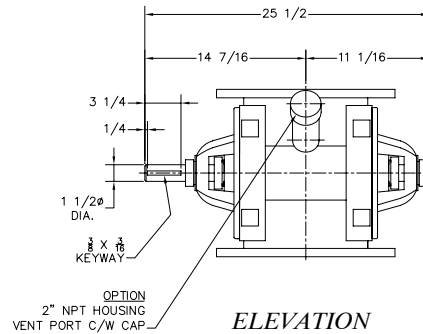
ACST-4 SEAL DETAIL



OPTIONAL FULL LENGTH
INSPECTION PANEL



ELEVATION



ELEVATION
(DRIVE NOT SHOWN)

| VALVE INFORMATION | | | | | |
|-------------------|----------|------------|------------|------------|-----------|
| HOUSING | ENDPLATE | ROTOR | BLADE TIP | | |
| MAT'L | MAT'L | MAT'L | TYPE | MAT'L | CLEARANCE |
| M.D. | C.I. | MILD STEEL | FIXED EDGE | MILD STEEL | .004-.007 |

| MOTOR | | | | | | |
|-----------|------|---------|-----------|------------|------------|------|
| MFG. | H.P. | VOLTAGE | ENCLOSURE | CL. & DIV. | FRAME SIZE | RPM |
| INLINE | 1 HP | T.B.A. | TEFC | STD. EFF. | T.B.A. | 1800 |
| GEARMOTOR | | | | | | |

| REDUCER | | | | |
|-----------|--------|--------|--------|------------|
| MFG. | FRAME | RATIO | SIZE | R.P.M. |
| INLINE | T.B.D. | T.B.D. | T.B.D. | APPROX. 45 |
| GEARMOTOR | | | | |

| CHAIN DRIVE | | | VALVE OPERATING CONDITIONS | | |
|-------------|------|-------|----------------------------|---------|--------|
| SIZE | BORE | SIZE | BORE | TEMP. | SEALS |
| 60B12 | 1"Ø | 60B26 | 1 1/2"Ø | AMBIENT | ACST-4 |

| CONVEYING INFORMATION | |
|--------------------------|-----------------|
| PRODUCT HANDLED | TO BE ADVISED |
| PRODUCT DENSITY | TO BE ADVISED |
| DISPLACEMENT / REV. 100% | .40 C.F.R. |
| VALVE SPEED | FINAL RPM IS 20 |
| CONVEY RATE | TO BE ADVISED |

NOTES

- ALL DIMENSIONS IN INCHES
- CONSTRUCTION: CAST GREY IRON HOUSING AND ENDPLATES (CL.40,217 BRINELL) FABRICATED CARBON STEEL ROTOR, OPEN END FIXED WITH RELIEVED TIPS (1/8" LAND) CLOSE TOLERANCE C.C.W. ROTATION LOOKING AT THE DRIVE END.
- BOTTOM FLANGE BOLT PATTERN MATCHES TOP FLANGE PATTERN
- PAINT: STANDARD METAL PREPARATION, EXTERIOR PRIMED AND ONE COAT FINISH ENAMEL - ACS BLUE DRIVE GUARD IS HI-VISIBILITY SAFETY YELLOW, MOTOR/GEARMOTOR IS MANUFACTURES STANDARD FINSH
- ACST-4 SHAFT SEAL ASSEMBLY (SEE DETAIL)
- WEIGHT WITH DRIVE PACKAGE 475 LBS.
- INCLUDED OPTIONS:
 - ENDPLATES: CAST IRON CONSTRUCTION
 - ROTOR: FABRICATED OPEN END MILD STEEL
 - ROTOR: FIXED EDGE MILD STEEL ROTOR TIPS - BEVELED
 - HOUSING: CAST IRON CONSTRUCTION

ANCASTER CONVEYING SYSTEMS LTD.
 611 ARGYLE ST. N CALEDONIA ONTARIO N3W-1M1
 TEL. (905) 765-2004 FAX. (905) 765-4491

TITLE: ACS MODEL MD 10" (ROUND) ROTARY VALVE, GENERAL ARRANGEMENT

FOR: GENERAL USE ONLY

PO: N/A

SCALE: 1"=12" DRAWN BY: G.T
 DATE: MAR/04/08 CHECKED:

B-2509

Proprietary Information
 This drawing is the confidential property of Ancaster Conveying Systems Ltd. and transmitted in confidence. The reproduction, use or disclosure, in whole or in part, of the design or details contained herein is prohibited without the express written permission of Ancaster Conveying Systems Inc.

| ISSUE | DATE | REVISION | BY |
|-------|------|----------|----|
| | | | |