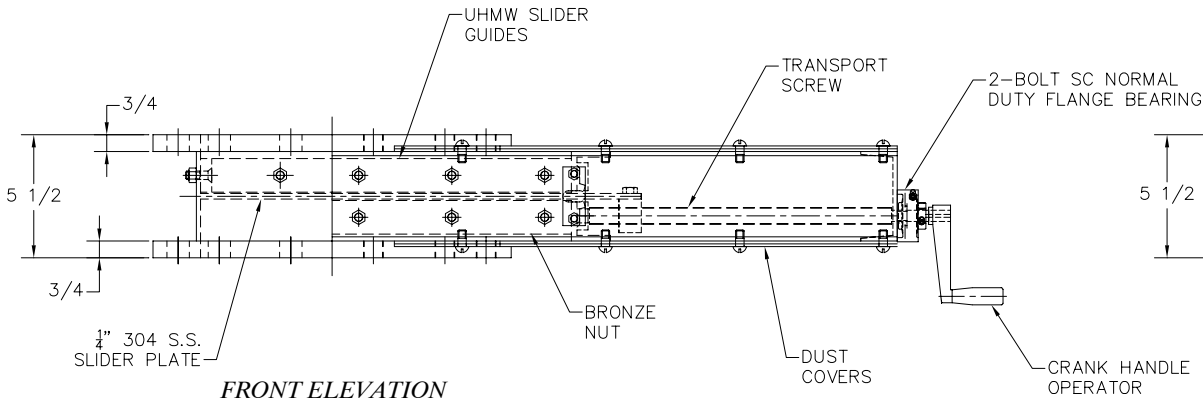
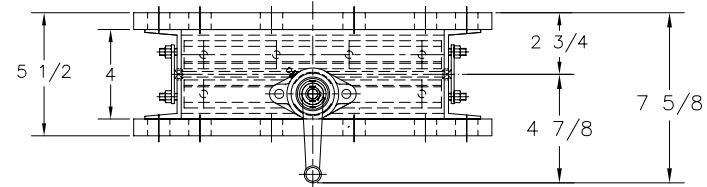


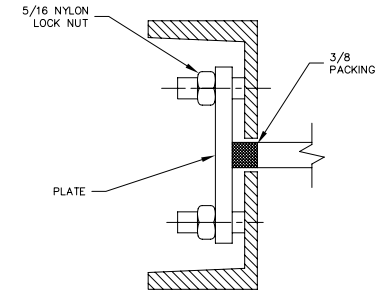
(6) $\phi 1$ DIA. HOLES ON 14 $\frac{1}{4}$ " B.C.D. **PLAN VIEW** (6) 7/8-9 TAPPED HOLES ON 14 $\frac{1}{4}$ " B.C.D.



FRONT ELEVATION



SIDE ELEVATION



SECTION A-A

NOTES:

- ACS MSG-R 10" ROUND MSG-MD SLIDE GATE FEATURES INCLUDE:
- 10" DIA. ROUND INLET & OUTLET
 - 10" 150# FLANGED BOLT PATTERN
 - 6" CRANK HANDLE
 - MILD STEEL C-CHANNEL FRAME
 - UHMW SLIDER GUIDES FOR 250°F MAX. SERVICE
 - $\frac{1}{4}$ " STAINLESS STEEL SLIDER PLATE
 - OPTIONAL DUST COVERS
 - PAINT: PRIMED & PAINTED ONE COAT ACS BLUE
 - SHIPPING WEIGHT 115 LBS.

Proprietary Information
This drawing is the confidential property of Ancaster Conveying Systems Ltd. and transmitted in confidence. The reproduction, use or disclosure, in whole or in part, of the design or details contained herein is prohibited without the express written permission of Warren Environmental Equipment Inc.

ACS **ANCASTER CONVEYING SYSTEMS LTD.**
611 ARGYLE ST. N CALEDONIA ONTARIO N3W-1M1
TEL. (905) 765-2004 FAX. (905) 765-4491

TITLE: ACS MODEL MSG-R 10" MAINTENANCE SLIDE GATE, GENERAL ARRANGEMENT

FOR: GENERAL USE ONLY

P.O.:

ISSUE	DATE	REVISION	BY	SCALE: N.T.S.	DRAWN BY: G.T	B-780
				DATE: MAY/01/08	CHECKED:	