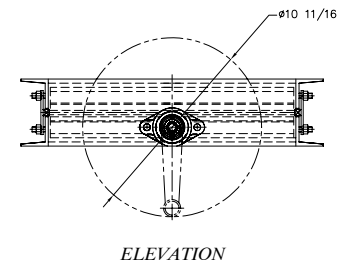
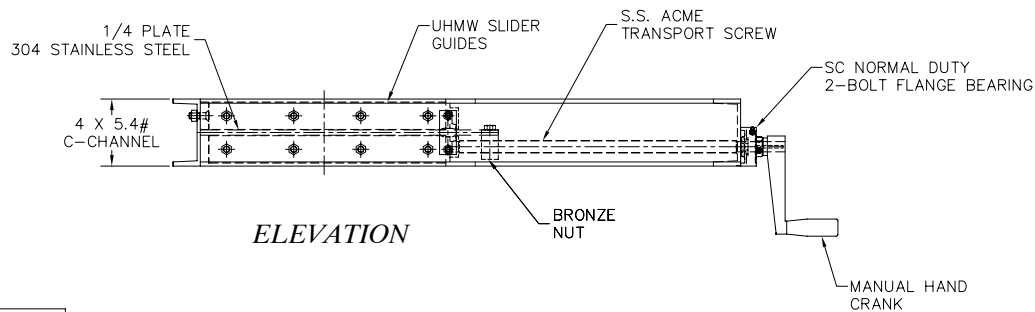


NOTES:

- ACS MODEL 14 X 14 MSG-S SQUARE SLIDE GATE
 FEATURES INCLUDE:
- 14 X 14 SQUARE INLET & OUTLET
 - DESIGNED FOR RATING 250°F MAX. SERVICE
 - 6" CRANK HANDLE
 - MILD STEEL C-CHANNEL FRAME
 - UHMW SLIDER GUIDES FOR 250°F MAX. SERVICE
 - 1/4" STAINLESS STEEL SLIDER PLATE
 - OPTIONAL BOLTED DUST COVERS
 - PAINT: PRIMED & PAINTED ONE COAT ACS BLUE
 - SHIPPING WEIGHT 135 LBS.



ANCASTER CONVEYING SYSTEMS LTD.
 611 ARGYLE ST. N CALEDONIA ONTARIO N3W-1M1
 TEL. (905) 765-2004 FAX. (905) 765-4491

TITLE: ACS MODEL MSG-S 14 X 14 MAINTENANCE SLIDE GATE, GENERAL ARRANGEMENT

FOR: GENERAL USE ONLY

P.O: N/A

SCALE: N.T.S. DRAWN BY: G.T.
 DATE: JUN/20/07 CHECKED:

B-451

Proprietary Information
 This drawing is the confidential property of Ancaster Conveying Systems Ltd. and transmitted in confidence. The reproduction, use or disclosure, in whole or in part, of the design or details contained herein is prohibited without the express written permission of Ancaster Conveying Systems Inc.

| ISSUE | DATE | REVISION | BY |
|-------|------|----------|----|
| | | | |