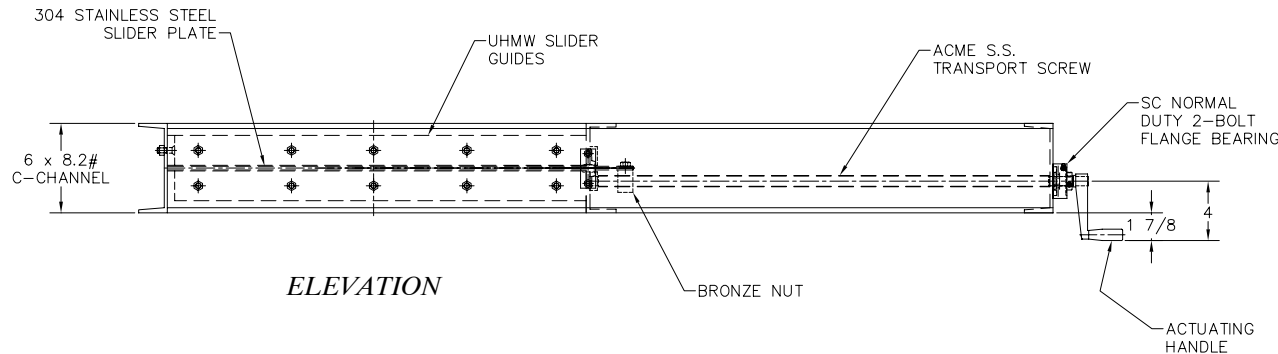
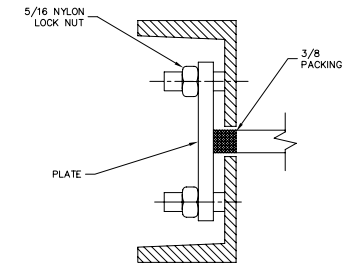


PLAN VIEW



ELEVATION



SECTION A-A

NOTES:

- ACS MSG-S 24" & 26" SQUARE MSG SLIDE GATE FEATURES INCLUDE:
- TOP & BOTTOM FLANGED BOLT PATTERN
  - HAND CRANK OPERATOR
  - MILD STEEL C-CHANNEL FRAME
  - UHMW FOR 250 DEGREES C, OPTIONAL BRONZE LINERS FOR UP TO 450 C DEGREES
  - STAINLESS STEEL SLIDER PLATE
  - PAINT: PRIMED & PAINTED ONE COAT ACS BLUE
  - SHIPPING WEIGHT 210 LBS.

**ANCASTER CONVEYING SYSTEMS LTD.**  
 611 ARGYLE ST. N CALEDONIA ONTARIO N3W-1M1  
 TEL. (905) 765-2004 FAX. (905) 765-4491

TITLE: ACS MODEL 24" & 26" MSG SLIDE GATE (SQUARE) GENERAL ARRANGEMENT

FOR: GENERAL USE ONLY

P.O: N/A

SCALE: N.T.S. DRAWN BY: G.T

DATE: JULY/22/08 CHECKED:

B-792-M

**Proprietary Information**  
 This drawing is the confidential property of Ancaster Conveying Systems Ltd. and transmitted in confidence. The reproduction, use or disclosure, in whole or in part, of the design or details contained herein is prohibited without the express written permission of Ancaster Conveying Systems Inc.

ISSUE	DATE	REVISION	BY