

VALVE INFORMATION					
HOUSING	ENDPLATE	ROTOR	BLADE TIP		
MAT'L	MAT'L	MAT'L	TYPE	MAT'L	CLEARANCE
M.S.	M.S.	MILD STEEL	FIXED EDGE	MILD STEEL	0.003-0.005

MOTOR					
MFG.	HP	VOLTAGE	ENCLOSURE	RATING	EFFICIENCY
SEW EURODRIVE	0.25	3/60/230-460v	TEFC	CSA APPROVED	HIGH EFF. 1800

REDUCER					
MFG.	FRAME	RATIO	SIZE	R.P.M.	
SEW EURODRIVE	WAF20	75.00	WAF20DRS71S4	23	

CHAIN DRIVE			VALVE CONDITIONS		
SIZE	BORE	SIZE	BORE	OPERATING TEMP.	SHAFT SEAL
---	---	---	NORMAL (50-250°F)	ACST-4	

CONVEYING INFORMATION			
PRODUCT HANDLED	---		
PRODUCT DENSITY	---		
DISPLACEMENT / REV. 100%	6-VANE .025 CFR	8-VANE .0233 CFR	4-VANE .0265 CFR
VALVE SPEED	23 RPM		
CONVEY RATE	---		

NOTES

1. ALL DIMENSIONS IN INCHES
2. CONSTRUCTION:
FABRICATED MILD STEEL HOUSING AND ENDPLATES
WITH FABRICATED 6-VANE CARBON STEEL ROTOR, OPEN END FIXED
WITH PLAIN TIPS (FLAT) CLOSE TOLERANCE C.C.W.
ROTATION LOOKING AT THE DRIVE END.
3. BOTTOM & TOP FLANGE BOLT PATTERNS ARE SYMMETRICAL
4. FINISH:
STANDARD METAL PREPARATION, EXTERIOR PRIMED AND ONE
COAT FINISH ENAMEL – ACS BLUE
DRIVE GUARD – HIGH VISIBILITY SAFETY YELLOW,
MOTOR/GEARMOTOR – MANUFACTURERS STANDARD FINISH
5. ACST-4 SHAFT SEAL ASSEMBLY (SEE DETAIL)
6. WEIGHT WITHOUT DRIVE PACKAGE 75 LBS.
7. FEATURES & OPTIONS:
– ENDPLATES: FABRICATED MILD STEEL CONSTRUCTION
– ENDPLATES: SHAFT SEAL AIR PURGE CONNECTION, 1/8" NPT
– ENDPLATES: ROTOR POCKET PURGE CONNECTION, 1/8" NPT
– ENDPLATES: FLASH CHROME INTERIOR BORE FACE
– ROTOR: FABRICATED 6-VANE OPEN END MILD STEEL
– ROTOR: FIXED EDGE MILD STEEL ROTOR TIPS – PLAIN
– HOUSING: FABRICATED MILD STEEL CONSTRUCTION
– HOUSING: ANSI Ø2" OR Ø3" FLANGE PATTERN
– HOUSING: VENT PORT CONNECTION, 1/4" NPT (CAPPED)
– HOUSING: FLASH CHROME INTERIOR BORE

(1) ONE REQUIRED

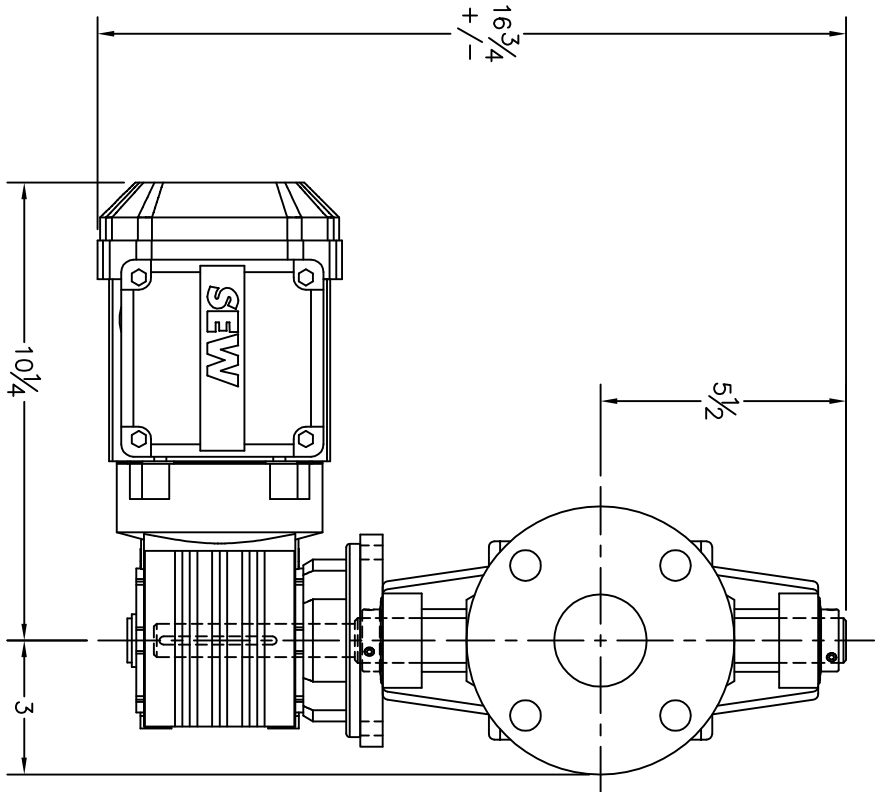
ACS

VALVES

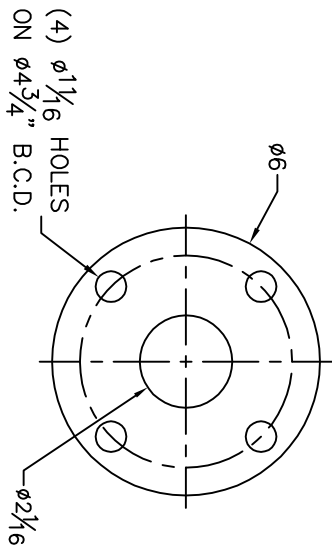
611 ARGYLE STREET NORTH
CALEDONIA ONT. N3W-1M1
PHONE: 905-765-2004
FAX: 905-765-4491
sales@ancasterconveying.com
www.ancasterconveying.com

TITLE: ACS MODEL MINI 19 ROTARY VALVE, 2" 150# FLANGES,
GENERAL ARRANGEMENT
FOR: GENERAL USE ONLY

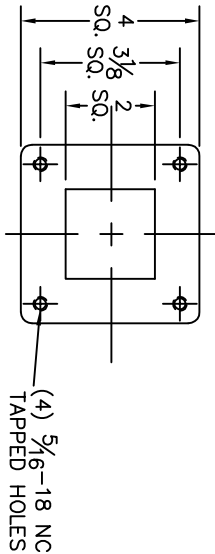
B	SEP /09 /15	CORRECTED CFR	TJN	P.O: N/A	
A	OCT /4 /13	RELEASED	JV	SCALE: N.T.S.	DRAWN BY: G.T
ISSUE	DATE	REVISION	BY	DATE: NOV /06 /10	CHECKED:
				B-3517-IDP	



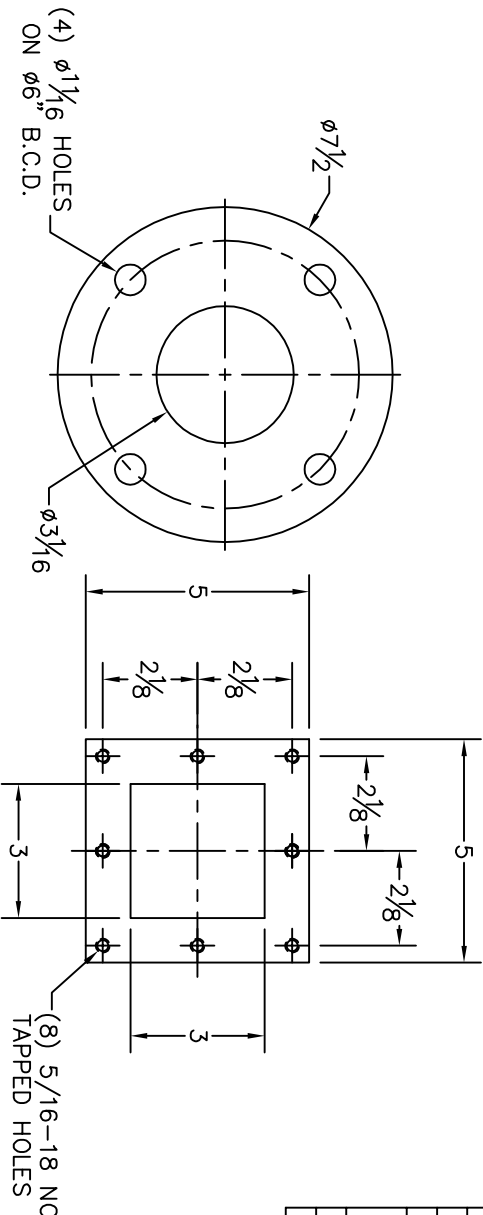
PLAN VIEW



Ø2" FLANGE DETAIL

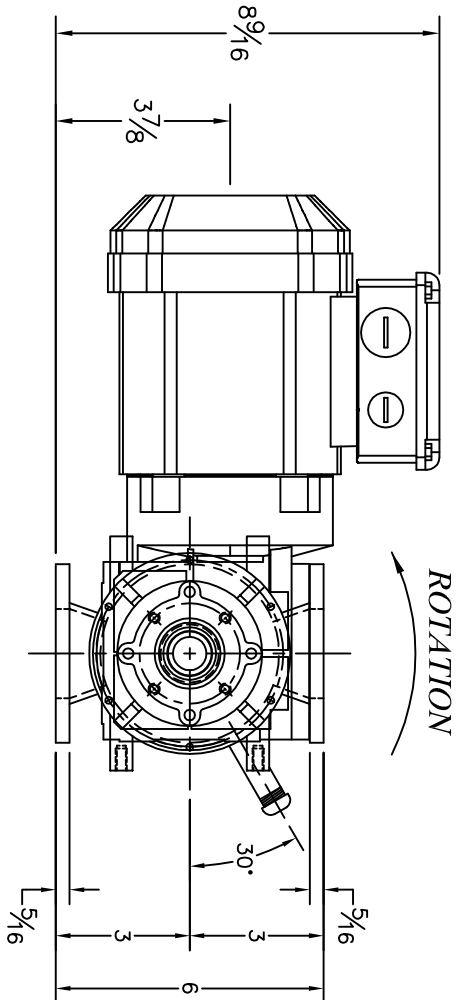


2" SQUARE FLANGE

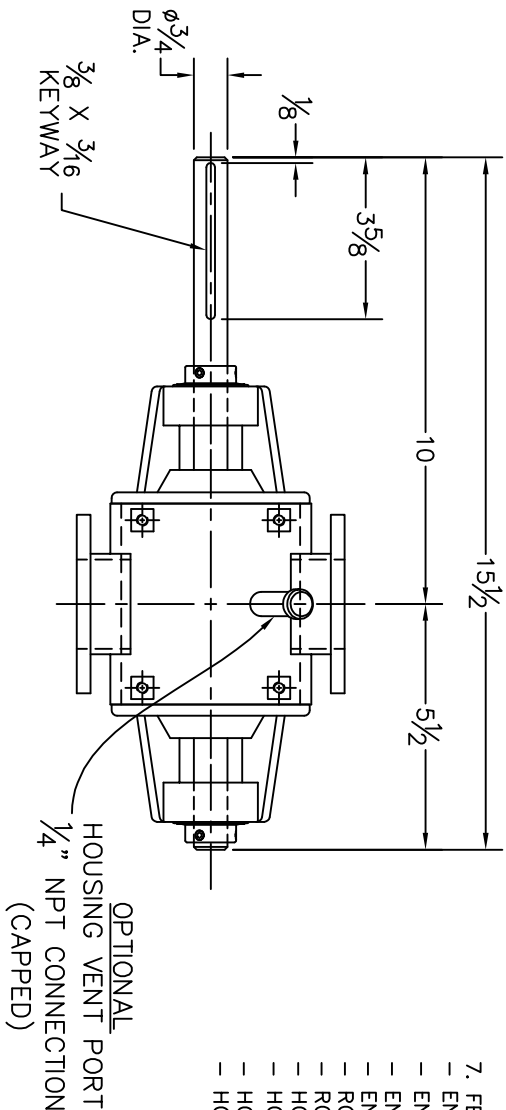


Ø3" FLANGE DETAIL

3" SQUARE FLANGE



FRONT ELEVATION



SIDE ELEVATION

Proprietary Information
This drawing is the confidential property of Ancaster Conveying Systems Ltd. and transmitted in confidence. The reproduction, use or disclosure, in whole or in part, of the design or details contained herein is prohibited without the express written permission of Ancaster Conveying Systems Inc.