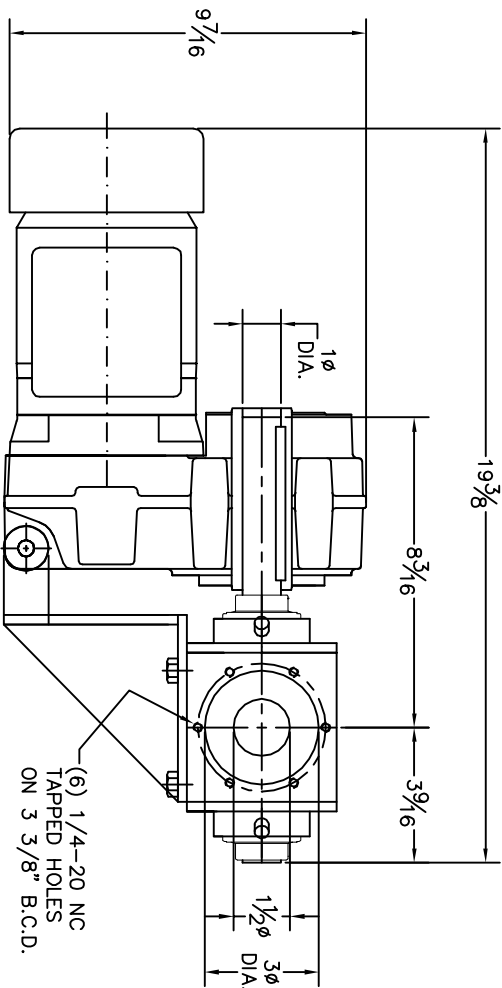
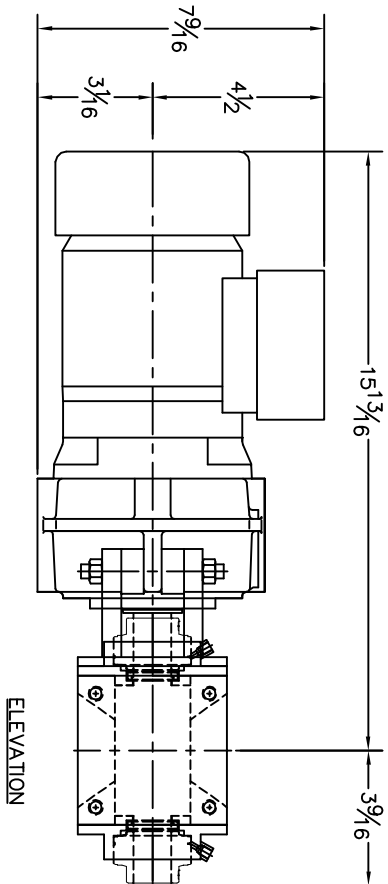


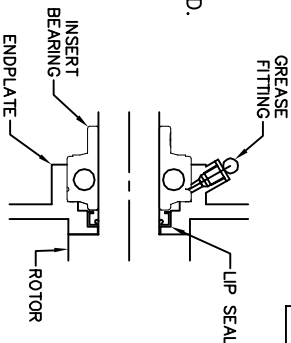
3" DIA.



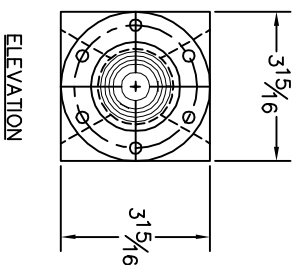
PLAN VIEW



ELEVATION



LIP SEAL TYPE SHAFT SEAL ASSEMBLY



ELEVATION

VALVE INFORMATION				
HOUSING	ENDPLATE	ROTOR	BLADE TIP	
MAT'L	MAT'L	MAT'L	TYPE	CLEARANCE
M.S.	4140	M.S.	METERING	4140 .003-.005

MOTOR				
MFG.	HP	VOLTAGE	ENCLOSURE	RATING
NORD GEAR	.16	3/60/230-460V	TEFC	INVERT. DUTY
CLINCHER				HIGH EFF. 1700

REDUCER				
MFG.	FRAME	RATIO	SIZE	R.P.M.
NORD GEAR	SK0282NB	85:00	SK0282NB-63S/4	20
CLINCHER				
CHAIN DRIVE NOT REQ'D.				
SIZE	BORE	SIZE	BORE	OPERATING TEMP.
---	---	---	---	AMBIENT

CONVEYING INFORMATION				
PRODUCT HANDLED	T.B.A.			
PRODUCT DENSITY	T.B.A.			
DISPLACEMENT/ REV.	.0005 THROUGH .0009			
VALVE SPEED	20-25 RPM			
CONVEY RATE	T.B.A.			

NOTES

1. ALL DIMENSIONS IN INCHES
2. CONSTRUCTION: MACHINED MILD STEEL, HOUSING AND ENDPLATES MACHINED METERING STYLE ROTOR CLOSE TOLERANCE C.C.W. ROTATION LOOKING AT THE DRIVE END.
3. BOTTOM & TOP FLANGE BOLT PATTERNS ARE SYMMETRICAL
4. PAINT: STANDARD METAL PREPARATION, EXTERIOR PRIMER AND ONE COAT FINISH ENAMEL - ACS BLUE MOTOR/GEARMOTOR - MANUFACTURERS STANDARD FINISH
5. LIP SEAL TYPE SHAFT SEAL (SEE DETAIL)
6. WEIGHT WITH DRIVE PACKAGE APPROX. 75 LBS.
7. STANDARD FEATURES
  - ENDPLATES: MILD STEEL MACHINED CONSTRUCTION
  - ROTOR: MACHINED METERING STYLE ROTOR
  - HOUSING: MILD STEEL MACHINED CONSTRUCTION

ACS VALVES

611 ARGYLE STEEL NORTH  
CALEDONIA ONT. N3W-1W1  
PHONE: 905-765-2004  
FAX: 905-765-4491  
sales@oncoasterconveying.com  
www.oncoasterconveying.com

TITLE: ACS MODEL 3" MICRO VALVE, GENERAL ARRANGEMENT

FOR GENERAL USE ONLY

PD N/A

SCALE: N.T.S.	DRAWN BY: G.T	B-3650-3"
DATE: JAN/15/14	CHECKED:	

ISSUE	DATE	REVISION	BY

Proprietary Information  
This drawing is the confidential  
property of Oncoaster Conveying  
Systems Inc. and is not to be  
reproduced, used, or disclosed  
without written permission of  
Oncoaster Conveying Systems Inc.  
The user of this drawing  
agrees to indemnify and hold  
Oncoaster Conveying Systems Inc.  
harmless from all claims, damages,  
costs and expenses, including  
attorney's fees, arising out of or  
resulting from the use of this  
drawing.