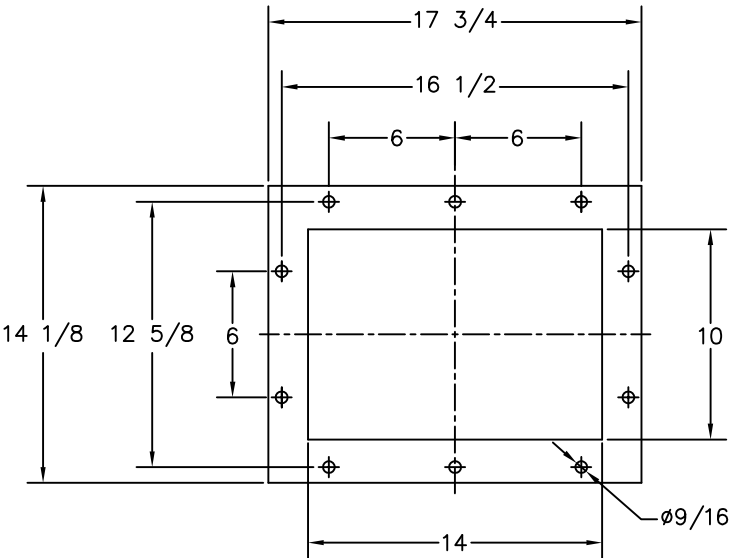
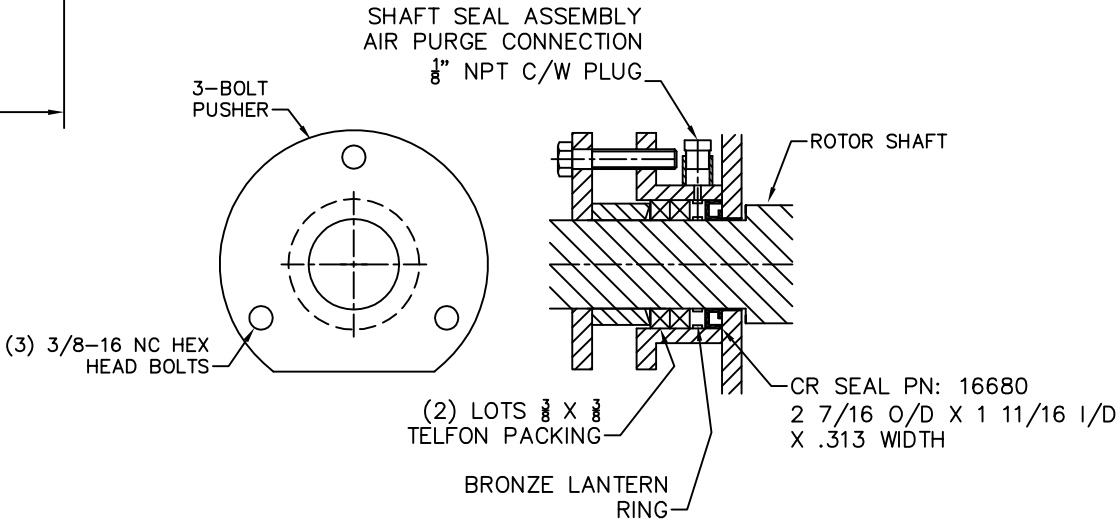


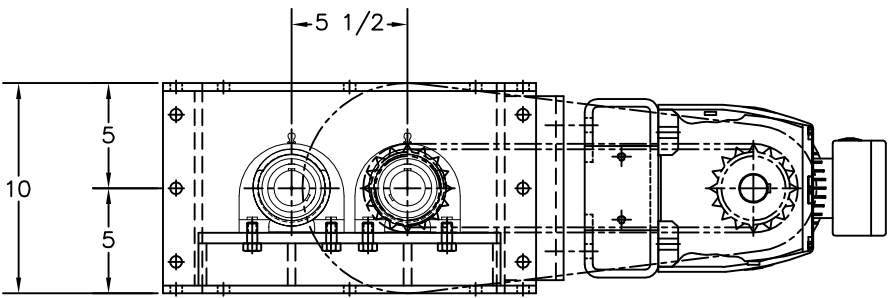
PLAN VIEW



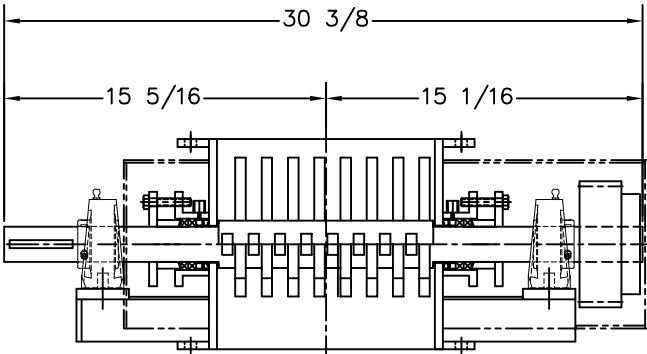
INLET/OUTLET
FLANGE DETAILS



SHAFT SEAL
ASSEMBLY DETAILS



ELEVATION



ELEVATION

VALVE INFORMATION					
HOUSING	ENDPLATE	ROTOR	BLADE TIP		
MAT'L	MAT'L	MAT'L	TYPE	MAT'L	CLEARANCE
M.S.	M.S.	MILD STEEL	LUMP BREAKER	MILD STEEL	.125

MOTOR						
MFG.	H.P.	VOLTAGE	ENCLOSURE	CL. & DIV.	FRAME SIZE	RPM
SEW EURODRIVE R-SERIES	2	T.B.A.	TEFC	STD. EFF.	DT90L4	1800

REDUCER				
MFG.	FRAME	RATIO	SIZE	R.P.M.
SEW EURODRIVE R-SERIES	R57	37.30	R57DT90L4	46

CHAIN DRIVE				VALVE OPERATING CONDITIONS	
SIZE	BORE	SIZE	BORE	TEMP.	SEALS
60B16	1 1/4Ø	60B16	1 11/16Ø	AMBIENT	LIP SEAL

CONVEYING INFORMATION	
PRODUCT HANDLED	TO BE ADVISED
PRODUCT DENSITY	TO BE ADVISED
DISPLACEMENT / REV. 100%	N/A
VALVE SPEED	46 RPM
CONVEY RATE	TO BE ADVISED

NOTES

- ALL DIMENSIONS IN INCHES
- CONSTRUCTION: FABRICATED MILD STEEL HOUSING AND ENDPLATES. (2) FABRICATED LUMP BREAKER STYLE MILD STEEL ROTORS DRIVEN BY (2) 22T SPUR GEARS C.W. ROTATION LOOKING AT THE DRIVE END.
- BOTTOM FLANGE BOLT PATTERN MATCHES TOP FLANGE PATTERN
- PAINT: STANDARD METAL PREPARATION, EXTERIOR PRIMED AND ONE COAT FINISH ENAMEL – ACS BLUE
DRIVE GUARD IS HI-VISIBILITY SAFETY YELLOW,
MOTOR/GEARMOTOR IS MANUFACTURES STANDARD FINSH
- (4) PACKING GLAND STYLE SHAFT SEAL ASSEMBLYS (SEE DETAIL)
- WEIGHT WITH DRIVE PACKAGE 550 LBS.
- INCLUDED OPTIONS:
 - ENDPLATES: FABRICATED MILD STEEL
 - ROTOR: (2) FABRICATED MILD STEEL LUMP BREAKER STYLE ROTORS
 - ROTOR: ROTOR TO ROTOR FINGER CLEARACE .125
 - ROTOR: ROTOR TO HOUSING FINGER CLEARNACE .125
 - HOUSING: MILD STEEL CONSTRUCTION
 - SPUR GEARS: (2) 22T PN: 4DP 20 PA
 - (4) SC NORMAL DUTY TAPPED BASE PILLOW BLOCK BEARINGS REF: 1 11/16 DIA. DODGE SERIES 209, PN: 054548, TB-SC-111



ANCASTER CONVEYING SYSTEMS LTD.
611 ARGYLE ST. N CALEDONIA ONTARIO N3W-1M1
TEL. (905) 765-2004 FAX. (905) 765-4491

TITLE: ACS MODEL 1410 LUMP BREAKER, GENERAL ARRANGEMENT
FOR: GENERAL USE ONLY
P.O: N/A

SCALE: N.T.S.	DRAWN BY: G.T	B-794
DATE: AUG/13/08	CHECKED:	

Proprietary Information
This drawing is the confidential property of Ancaster Conveying Systems Ltd. and transmitted in confidence. The reproduction, use or disclosure, in whole or in part, of the design or details contained herein is prohibited without the express written permission of Ancaster Conveying Systems Inc.

ISSUE	DATE	REVISION	BY